

CUCLUE 1

You will need:

- 31 rectangles 2" by 12 ½" of Fabric A.
- 31 rectangles 2" by 12 ½" of Fabric B.
- 31 rectangles 2" by 12 ½" of Fabric C.

Instructions

1. Stitch the fabric rectangles together in groups of 3, placing the C fabric in the center between A and B. Press the seams toward the center strip as indicated by the orange arrows. Make 31.

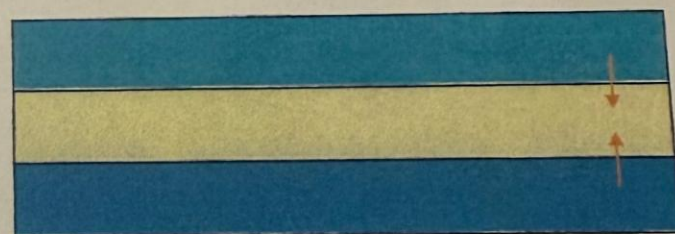
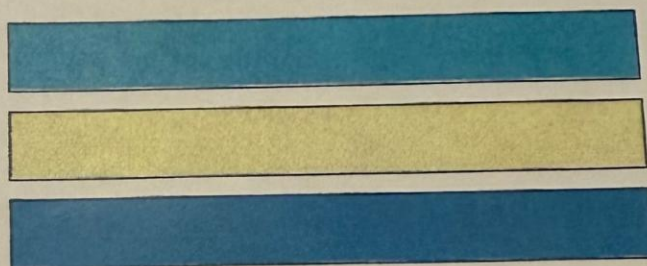
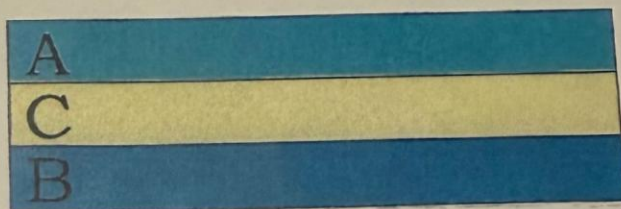
These units will measure 5" by 12 ½" including seam allowance.

Tips:

Check your seam allowance to make sure your unit size is accurate.

Press your seams open, and then to one side

to make sure there are no small tucks in the seam and your units lay completely flat.



Make 31